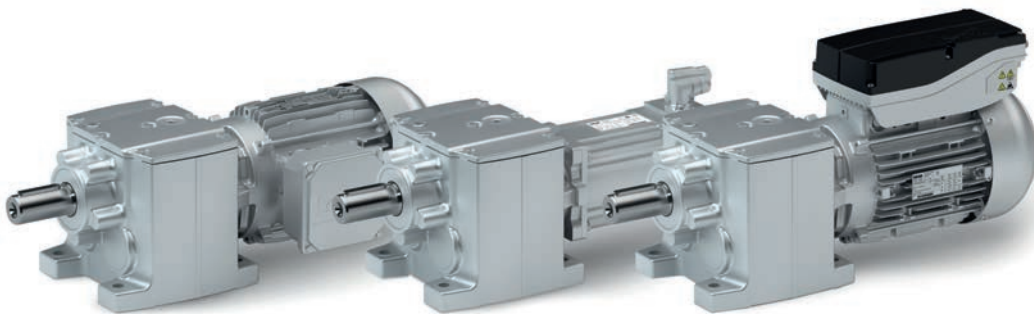


# Robust and precise application.



Our efficient helical gearboxes boast high permissible radial forces, closely stepped ratios and low backlash.

They are available in 2-stage and 3-stage designs with a maximum torque of 450 Nm and ratios of up to  $i=370$  depending on your individual requirements.

## Highlights

- Precision scaling for size/torque ensures optimal machine adjustments
- Standardised shaft and flange dimensions for easy machine integration
- Exceptional efficiency of 94% or more

## Technical data

| Gearbox size           |      | g500-H45           | g500-H100         | g500-H140                | g500-H210  | g500-H320  | g500-H450          |
|------------------------|------|--------------------|-------------------|--------------------------|------------|------------|--------------------|
| Rated torque           | [Nm] | 45                 | 100               | 140                      | 210        | 320        | 450                |
| Ratio range            |      | 2.6 - 60           | 3.3 - 60          | 3.3 - 75                 | 3.3 - 370  | 3.4 - 320  | 3.4 - 370          |
| Solid shaft dimensions | [mm] | 14 x 28<br>20 x 40 | 20 x 40           | 25 x 50                  | 25 x 50    | 30 x 60    | 30 x 60<br>35 x 70 |
| Flange dimensions      | [mm] | 120<br>140<br>160  | 120<br>140<br>160 | 120<br>140<br>160<br>200 | 160<br>200 | 200<br>250 | 250<br>300         |



**Квazar**  
ТОРГОВО-ПРОИЗВОДСТВЕННАЯ КОМПАНИЯ

Тел: +7 (846) 202-2000

[www.tpk-kvazar.com](http://www.tpk-kvazar.com)

# g500-H helical geared motors

Gearbox

When used in conjunction with three-phase AC motors and servo motors, our helical gearboxes form a compact, powerful drive unit. Numerous options at the input and output ends ensure that the drive can be easily and precisely adjusted to suit your application.

## Designs

- With Lenze Smart Motor m300, rated torque of 1.75 Nm and 5 Nm
- With IE1 / IE2 three-phase AC motors according to the ErP Directive: Power range 0.06 to 9.2 kW
- With inverter-optimised MF three-phase AC motors: Power range 0.55 to 22 kW
- With synchronous servo motors and asynchronous servo motors Power range: 0.25 to 9.1 kW

### Tailored to your individual ambient conditions

| Gearbox with                     | Lenze Smart Motor               | Three-phase AC motors | Servo motors |
|----------------------------------|---------------------------------|-----------------------|--------------|
| Enclosure                        | IP55                            |                       | IP54 / IP65  |
| EN 60529                         |                                 |                       |              |
| Energy efficiency class          | IE1, IE2 or inverter-optimised  |                       |              |
| Approvals                        | cURus, GOST-R, CCC and UkrSepro |                       |              |
| Climatic conditions              |                                 |                       |              |
| Storage temperature              | -30 to 60 °C                    |                       |              |
| Operating temperature            | -20 to 40 °C                    |                       |              |
| Surface and corrosion protection |                                 |                       |              |
| OKS-G (primed)                   | 1K primer                       |                       |              |
| OKS-S (small)                    | 2K PUR top coat                 |                       |              |
| OKS-M (medium)                   | 1K primer, 2K PUR top coat      |                       |              |
| OKS-L (large)                    | 2K EP primer, 2K PUR top coat   |                       |              |

#### Perfect mechatronic integration with the Lenze Smart Motor

- Covers a wide range of applications
- Reduces the number of different versions by up to 70 %
- Offers exceptional energy efficiency over a long service life
- Achieves greater productivity and maximum reliability

**Lenze  
BlueGreen  
Solutions**

g500:  
min. 94% efficiency

[www.Lenze.com](http://www.Lenze.com)

Lenze Drives GmbH · Postfach 10 13 52 · D-31763 Hameln · 11.2013 · Version 1.0 en



**Квазар**  
ТОРГОВО-ПРОИЗВОДСТВЕННАЯ КОМПАНИЯ

Тел: +7 (846) 202-2000

[www.tpk-kvazar.com](http://www.tpk-kvazar.com)